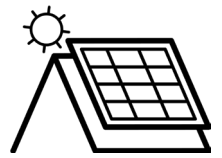




Case Study – Demolition Ranch HQ, Texas

ProteaBracket™



At-A-Glance

Project Name

Demolition Ranch HQ

Location

Boerne, TX

General Contractor

Texas Barndominium

Solar Contractor

Earth Smart Solar

Solar Installer

Alamo City Solar

Module Manufacturer

Mission Solar Energy

Inverter Manufacturer

Sol-Ark 12K Inverter

Battery Storage

Sol-Ark

Metal Building

WD Metal Buildings PBR Panels

Roof Profile

26-gauge WD Metal Roof D-Panels

Industry

Commercial

The Situation

Earth Smart Solar needed a fully engineered, corrosion-resistant, weathertight solar mounting solution that would last the life of the roof.

The Result

Since this was the installer's first exposed-fastened metal roof project, he sought advice from others in the industry who recommended the ProteaBracket, a versatile solar PV component for attachment to exposed-fastened, trapezoidal-rib metal roof profiles.

Project Stats

Roof Pitch: 3:12

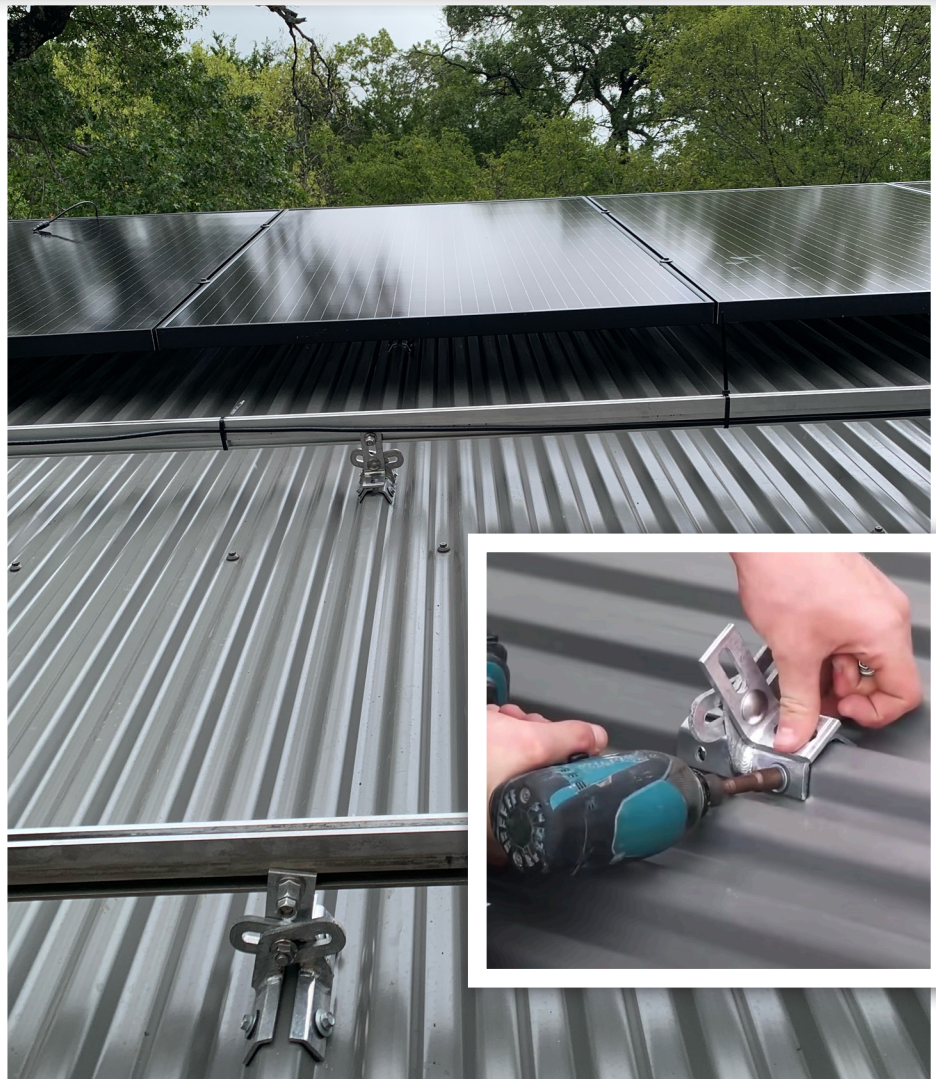
Solar Project Size: 3.84kW

Solar Modules: 12 panels (320 watts each)

Battery System: Sol-Ark (4 battery packs)

S-5! Products Supplied:

- ProteaBracket™ (24)



The Project

Demolition Ranch is the largest firearms channel on YouTube, receiving around a million views every day, and since its inception in 2011, it has amassed nearly 11 million subscribers.

On location at the show's gun range just north of San Antonio, is a newly constructed metal building housing supplies such as paint and ammo for making YouTube videos, in addition to a lounge area for taking breaks while filming.

Due to the ranch's remote location, the owner wished to build an off-the-grid building featuring a 3.84kW rooftop solar array together with a battery storage system to power the building. The rooftop solar modules are secured in place using the S-5! ProteaBracket.

The Challenge

There is no electricity on the property. Installing electrical service was not a viable option, so the owner set out to build an off-the-grid facility. His total power needs included LED lighting, power tools, a mini-split air conditioning system, a small refrigerator and a small water pump (he also installed a rainwater catchment system for harvesting water for later use).

The challenge was to find a corrosion-resistant solar mounting solution for the building's exposed-fastened metal roof profile that would withstand the area's heavy rain and winds. Additionally, since the facility is located in the countryside, requiring contractors to traverse hilly dirt roads to the jobsite, transporting tools and materials presented logistical challenges.

The installer needed a solar mounting solution that was lightweight and compact to transport yet would provide a weathertight, secure dependable attachment to endure extreme weather conditions.

Long-Term Outlook

The ProteaBracket provided the quality look the owner wanted with an easy-to-install lightweight and weathertight solar mounting solution—designed and engineered to last the life of the roof.

How Did the ProteaBracket Help?

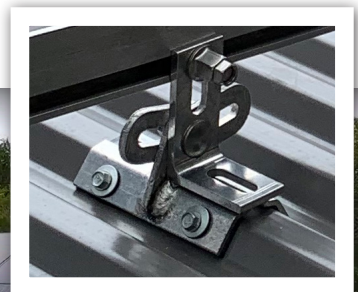
- Corrosion-resistant materials
- Load-tested for engineered application
- Lighter than alternatives – saves on shipping
- Peel-and-stick prevents accidental shifting during installation
- Adjustable – fits rib profiles up to 3"
- Warranted for the life of the roof

The Solution

Twelve solar panels were installed on the south-facing roof with room for additional panels on the remaining roof, should the owner choose to install additional solar at a later date.

A versatile bracket for mounting solar PV to trapezoidal metal roof profiles, the fully pre-assembled ProteaBracket fastens into the sheeting and features an adjustable attachment base to accommodate different roof profiles and module attachment options. Its pre-applied EPDM gasket with peel and stick adhesive makes installation a snap, ensuring accurate and secure placement and a weather-proof fit.

And since the ProteaBracket is light weight, it made transporting a cinch. Made of aluminum, the bracket enables a corrosion-free attachment.



“It is well known in the industry that S-5! is the leader in metal roof attachments. We chose the ProteaBracket because it came highly recommended to us for this project. We were surprised at how quick and easy it was to install, and it provided the weathertight solution we were seeking. We have been using S-5! ever since.”

— Brandon Jones, Co-Founder, Earth Smart Solar



The Right Way® | (888) 825-3432 | www.S-5.com

