

Style Guide

Maintaining the Brand



S-5!®
The Right Way



Importance of Maintaining a Consistent Corporate Brand & Image

Your corporate identity should be considered one of your company's most precious assets. It should be guarded and protected as such. The cost of not doing so is confusion, loss of time and money, frustration and the potential loss of brand equity.

This usage guide ensures the protection of your corporate identity; documents the precise rules of usage that, if applied consistently, will protect your brand and the investment made in it. Strict adherence to these rules that govern corporate branding will establish brand equity—and permit all communications produced to take on a unified look and feel.

The logo features the text "S-5!" in a large, bold, yellow sans-serif font. A registered trademark symbol (®) is located to the upper right of the exclamation mark. The logo is set against a solid black rectangular background.

The Right Way

TESTED. TRUSTED. ENGINEERED.

Table of Contents

About S-5!

- Approved Company Descriptions 5
- Approved Founder Descriptions 6

Logo Usage

- *The Right Way* 7
- Logo and Placement of *The Right Way* Slogan 8
- Full Color and Black and White Usage of Logo 9

Slogans and Specific Product Spellings 10

Proper Use of the American Flag

- Made in America and USA Flag 11

Headline and Body Fonts 12

Color Scheme

- Two-Color Usage 13
- General Color Palette 14
- Website Color Palette 15

Use of Product Names 16

Trademark and Registered Symbols

- Products Listed By Solution 17
- Descriptors Upon First Reference 20

Image and Text Notation Rules 24

Sample Product Sheet 25

Sample Product Install Sheet 26

About S-5! (Long version) (116 WORDS)

Founded by a veteran metal roof expert, S-5! has been the leading authority on metal roof attachment solutions since 1992. S-5!'s zero-penetration clamps and lifetime brackets attach ancillary items to standing seam and exposed-fastened metal roofs respectively, while maintaining roof integrity and warranties. S-5! solutions are engineered for a variety of applications: snow retention, fall protection and wind performance systems, satellite dishes, solar arrays, signs/banners, light fixtures, stack/flue bracing, walkways, HVAC, lightning protection, equipment screens, conduit, condensate lines and more.

Made in the U.S.A., S-5!'s solutions have revolutionized the metal roofing industry and are now installed on more than 2 million metal roofs worldwide, providing strength and longevity never before seen. For more information, visit www.S-5.com.

About S-5! (Short version) (81 WORDS)

Founded by a veteran metal roof expert, S-5! has been the leading authority on metal roof attachment solutions since 1992. S-5!'s zero-penetration clamps and lifetime brackets attach ancillary items to standing seam and exposed-fastened metal roofs respectively, while maintaining roof integrity and warranties. Made in the U.S.A., S-5! solutions are engineered for a variety of roof-mounted applications and are now installed on more than 2 million metal roofs worldwide, providing strength and longevity never before seen. For more information, visit www.S-5.com.

About S-5! (Shortest version) (48 WORDS)

Founded by a veteran metal roof expert, S-5! has been the leading authority on metal roof attachment solutions since 1992. S-5!'s zero-penetration clamps and lifetime brackets attach ancillary items to standing seam and exposed-fastened metal roofs respectively, while maintaining roof integrity and warranties. For more information, visit www.S-5.com.

About Rob Haddock (31 WORDS)

S-5! CEO and Founder, Rob Haddock is a former contractor, award-winning roof-forensics expert, author, lecturer and building envelope scientist who has worked in various aspects of metal roofing for five decades.

About Rob Haddock (Solar Focused material only) (72 WORDS)

S-5! CEO and Founder, Rob Haddock is a former contractor, award-winning roof-forensics expert, author, lecturer and building envelope scientist who has worked in various aspects of metal roofing for five decades. Together with his son, Dustin, they co-invented, a rail-less direct-attach solar solution that provides a simple, secure method to “lay & play” PV modules with tested, engineered, cost-saving, attachment to the only roof type that outlasts the solar—the metal roof.

The Right Way[™]

In all instances, the ***The Right Way*** must be used:

- with the first letter of each word capitalized; ***The Right Way***
- in its designated font, Arial and in italics.

The first and most prominent use of the mark ***The Right Way***[™] alone in a single document/website page must also be marked with the trademark symbol (™).

Subsequent uses of ***The Right Way*** in paragraph copy do not need to include the trademark symbol (™).

When ***The Right Way*** is used alone (not combined with the S-5! mark), boldface is optional but preferred.

When appearing as part of the S-5! logo, such as shown below, ***The Right Way*** must also be used:

- in boldface
- but without the trademark symbol (™).

Old Way



"The Right Way" is now italicized and it is no longer followed with an "!" and "®"

New Way



Italicized "The Right Way"
No "!"
No "®"

An exclamation point may only be added after ***The Right Way***, when it falls at the end of sentence and only within context of paragraph copy and not as a general practice.

Example: Stop doing it the wrong way, when with **S-5!**, you can do it ***The Right Way!***

Logo Usage

Logo and Placement of *The Right Way* Slogan

When centering the logo, always center based on the characters “S-5!” and disregard the ®.



Correct Alignment



Incorrect Alignment



Full Color and Black and White Usage of Logo

Whenever possible, the S-5! logo should appear in two colors on black. When necessary, the black or white versions may be used. A reversed treatment must be used whenever the white version of the logo is used (i.e. dark/black background).



Full Color Usage of Logo

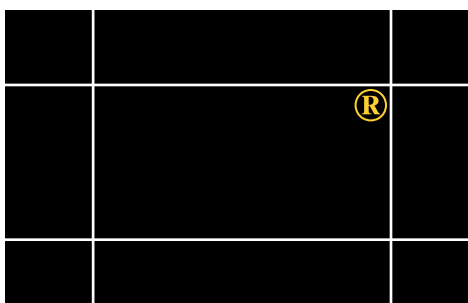
The full color treatment of the logo may not work when interacting with certain backgrounds and textures. When not practical, or when the colors will detract from the effectiveness of the brand, place the logo on a black rectangle.

Other options and treatments must be approved prior to use.

Logo Margin and Background Limitations

Clear areas or control margins have been established for the S-5! logo. The clear area around the logotype should be at least 50% of the height of the mark.

The S-5! logo should not be enclosed within a graphic shape or border for the purpose of enclosure, as this would be mistaken as part of the identity.



Centering the
Logo

Slogans & Specific Product Spellings

Company Slogans

- The Right Way (See page 7 for specific ™ and ® designations)
- Tested. Trusted. Engineered. (Can be lowercase or uppercase)
- Testing. Production. Engineering. (Can be lowercase or uppercase)
- The Metal Roof Experts™
- The world's leading authority on metal roof attachment solutions

Product Slogans

CanDuit™ -

- *Capital "C" and "D"*
- *"How do you attach pipes, conduit and other round objects to metal roofs? S-5! CanDuit!"*

GRipperFix® -

- *Font of "R" and "F" are made two-points bigger than remaining letters*
- *Arial font and Italicized*
- *Ripper - Adjective. (Britain, Australia, slang) Very good; excellent; fantastic*

GRIPPERFIX®

Proper Use of the American Flag

Made in America and USA Flag

- Only use the official red, white and blue American flag
- Flag can be used with or without the “Made in USA” tagline

Correct Flag Icon

*Appropriate to use
with or without “Made
in USA” tagline*



Align “Made in USA”
directly under the flag

Made in USA

Incorrect Flag Icon

No longer Use



Headline and Body Fonts

There are four accepted fonts for use in digital and print marketing copy: Arial, Myriad Pro, Helvetica and PT Sans.

Headline Font

Arial Bold

Arial Regular

Arial Italic

Sample Headline

**Protect Your Insulated Metal Roof's
Thermal and Moisture Barrier**

Body Copy

Myriad Pro Bold

Myriad Pro Regular

Myriad Pro Italic

Sample Body Copy

IMPs deliver energy savings, high R-values and protection against condensation. SnoBracket protects your IMP investment by securing into only the upper portion of the panel to prevent thermal bridging to the internal structure. Moreover, SnoBracket protects your roof with factory-applied, premium, closed-cell EPDM rubber gaskets, creating a positive seal against water intrusion.

Helvetica Neue Regular

Helvetica Neue Regular

Helvetica Neue Italic

Website Font (Headlines and Body Copy)

PT Sans Bold

PT Sans Regular

PT Sans Italic

Color Scheme

Two-Color Usage

When four-color printing is not possible, use of a two-color design is acceptable. Use the S-5! Gold Spot Color PMS 123 C and black for the two colors. Pantone inks will print a consistent color whereas CMYK may print differently on different print runs. See the next page for CMYK and RGB equivalents.



PANTONE

123C

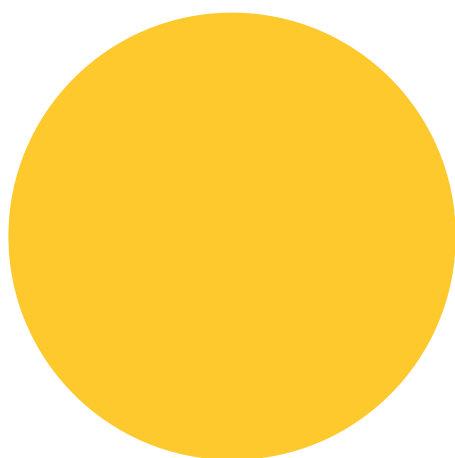


Spot

Black

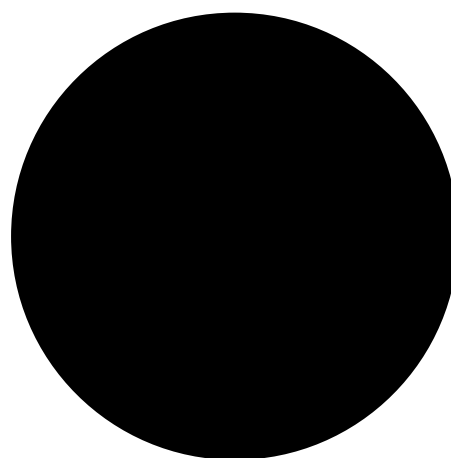
Color Scheme

General Color Palette



Gold

Spot	PANTONE 123C
CMYK	0 19 89 0
RGB	255 182 18
Hexadecimal	#FDC82F
	#FFCE34 (PRINT)



Black

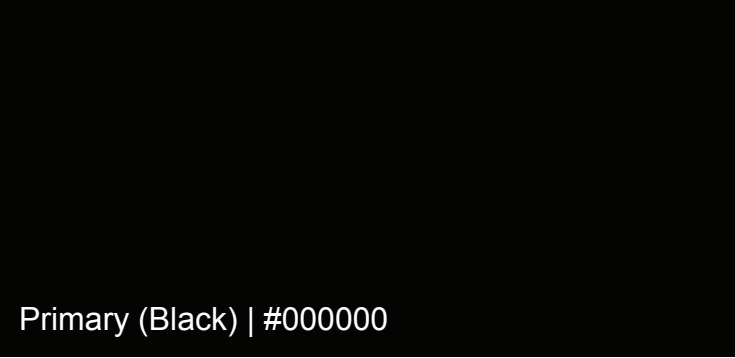
Spot	Black
CMYK	0 0 0 100
RGB	0 0 0
Hexadecimal	#000000

Rich Black to be used in printing when plain black gives insufficient coverage.

CMYK 40 60 0 100

Color Scheme


Website Color Palette



Primary (Black) | #000000




Secondary (Gold/Yellow) | #FDC82F



Dark Gray | #414141



Gray | #BBBBBB



Light Gray | #F1F1F1



White | #FFFFFF

When referring to S-5! products in written materials or online, always use the appropriate trademark symbols and registered symbols (as provided on pages **17-19**) with the product name upon first reference per published page/per website page. For the purposes of this style guide, S-5! defines first reference as the most obvious or prominent place on the page (where the eye is drawn to).

Additionally, always use descriptors with product names upon first reference, i.e., PVKIT® solar solution, ColorGard® snow guard system, S-5-S™ clamp, ProteaBracket™ attachment. The only exception is use of the company name S-5! ® (no descriptor required). However, do not use S-5! as a possessive noun, i.e., S-5!'s PVKIT.

Upon second and further references in written materials or online, you may use the product name without the trademark/registered mark symbols and without the descriptor, but you must distinguish the mark from surrounding text as noted below, i.e., PVKIT, ColorGard and ProteaBracket. For a complete list of appropriate descriptors with associated products, see pages **20-23**.

Do not use product names in plural form, i.e., SnoRails, SnoFences, SnowFeet

Distinguishing Marks from Surrounding Text

Upon second and further references, per published page, always display marks in a distinctive manner by setting them apart from surrounding text such as using capital letters, italics, bold, color or quotation marks, i.e., ColorGard, ProteaBracket. Some S-5! products are in all caps so that addresses this concern for those products, i.e., PVKIT, PVKONCEAL. See page **17-19** for appropriate capitalization of product names.

Consistently Use Same Form of the Mark

Ensure use of the mark is consistent. The mark must be used in the form it was filed/registered and should be used in the same way every time. For example, the marks “PVKIT” and “PVKONCEAL” should always be used as one word and capitalized, not partly capitalize, not two words and not with hyphens.

Again, see page 20-23 for appropriate descriptors with associated product names.

Trademark and Registered Symbols

Here are the correct Registered (®) and Trademark (™) symbols that correspond with each S-5! product. All products are listed by solution.

Snow Retention	Solar	Utility	Brackets
ColorGard®	CanDuit™	GRipperFix®	CorruBracket™
ColoGard® Punched			CorruBracket™ 100T
ColorGard® UnPunched	direct-attach™		CorruBracket™ 500T
ColorGard® Splice			CorruBracket™ 100T PV
DualClip™ II	PVKIT®		CorruBracket™ 500T PV
DualClip™ III			ProteaBracket™
DualGard™	PVKIT® EdgeGrab		RibBracket™ I-V
DualPipe™			RibBracket™
DualPipe™ End Cap & Collar	PVKIT® MidGrab		RibBracket™ I
NEX® pipe	PVKONCEAL™		RibBracket™ II
S-5-ASF™			RibBracket™ III
S-5-AE™	SolarFoot™		RibBracket™ IV
S-5-BSF™			RibBracket™ V
S-5-BE™	S-Timator™		SnoBracket™
SnapClip™ II			SnoBracket™ RB
SnapClip™ III			SnoBracket™ TB
SnoClip™ II			SolarFoot™
SnoClip™ III			TrapBracket™
SnoFence™			TrapBracket™ 2.0
SnoPost™			VersaBracket™
SnoPost™ B			VersaBracket™ 47
SnoPost™ BE			VersaBracket™ 67
SnoPost™ E			
SnoRail™			
VersaClip™			
VersaClip™ Long			
X-Clip™ II			
X-Clip™ III			
X-Gard™ 1.0			
X-Gard™ 2.0			
X-Gard™ End Cap			
VersaGard™			
VersaGard™ V			

Trademark and Registered Symbols (Continued...)

Here are the correct Registered (®) and Trademark (™) symbols that correspond with each S-5! product. All products are listed by solution.

Clamps	Wind	Inserts
S-5-B™	WindClamp™	S-5-GX™ 10
S-5-B™ Mini	WindClamp™ DL	S-5-GX™ 50
S-5-E™	WindClamp™ UD	S-5-GXM™ 10
S-5-E™ Mini	WindClamp™ 2X	S-5-GXM™ 50
S-5-EF™		S-5-KHD™ 3"
S-5-FA™		S-5-KHD™ 6"
S-5-H™		
S-5-H™ Mini		
S-5-H90™		
S-5-K Grip™		
S-5-K Grip™ Mini		
S-5-K Grip™ Snow		
S-5-KHD™		
S-5-MX™ Mini		
S-5-N™		
S-5-N™ Mini		
S-5-N™ 1.5		
S-5-N™ 1.5 Mini		
S-5-NH™ 1.5		
S-5-NH™ 1.5 Mini		
S-5-Q™		
S-5-Q™ Mini		
S-5-R465™		
S-5-R465™ Mini		

Trademark and Registered Symbols (Continued...)

Here are the correct Registered (®) and Trademark (™) symbols that correspond with each S-5! product. All products are listed by solution.

Clamps (Continued...)

S-5-S™

S-5-S™ Mini

S-5-SS™

S-5-SS™ Mini

S-5-T™

S-5-T™ Mini

S-5-U™

S-5-U™ Mini

S-5-USF™

S-5-V™

S-5-V™ Mini

S-5-Z™

S-5-Z™ Mini

S-5-ZF™

S-5-ZH™

Descriptors Upon First Reference

Always use descriptors with product names upon first reference per published page/per website page. S-5! defines first reference as the most obvious or prominent place on the page (where the eye is drawn to). Upon second and further reference, drop descriptors, trademarks and registered marks.

Snow Retention	Solar	Brackets
ColorGard® snow guard system	CanDuit™ clamp	CorruBracket™ attachment
ColorGard® Punched crossmember	direct-attach™ solar mount	CorruBracket™ 100T attachment
ColorGard® UnPunched crossmember	PVKIT® solar solution	CorruBracket™ 500T attachment
ColorGard® Splice	PVKIT® EdgeGrab	CorruBracket™ 100T PV attachment
DualClip™ II accessory	PVKIT® MidGrab	CorruBracket™ 500T PV attachment
DualClip™ III accessory	PVKONCEAL™ module skirt	ProteaBracket™ attachment
DualGard™ snow guard system	SolarFoot™ attachment	RibBracket™ I-V attachment
DualPipe™ crossmember	S-Timator™ solar calculator	RibBracket™ attachment
DualPipe™ End Cap & Collar		RibBracket™ I attachment
NEX® pipe crossmember		RibBracket™ II attachment
S-5-ASF™ clamp		RibBracket™ III attachment
S-5-AE™ clamp		RibBracket™ IV attachment
S-5-BSF™ clamp		RibBracket™ V attachment
S-5-BE™ clamp		
SnapClip™ II accessory		
SnapClip™ III accessory		
SnoClip™ II accessory		
SnoClip™ III accessory		

Descriptors Upon First Reference (Continued...)

Always use descriptors with product names upon first reference per published page/per website page. S-5! defines first reference as the most obvious or prominent place on the page (where the eye is drawn to). Upon second and further reference, drop descriptors, trademarks and registered marks.

Snow Retention (Cont...)	Utility	Brackets (Cont...)
SnoFence™ snow guard system	GRipperFix® utility mounting system	SnoBracket™ attachment
SnoPost™ attachment		SnoBracket™ RB attachment
SnoPost™ B attachment		SnoBracket™ TB attachment
SnoPost™ BE attachment		SolarFoot™ attachment
SnoPost™ E attachment		TrapBracket™ attachment
SnoRail™ snow guard system		TrapBracket™ 2.0 attachment
VersaClip™ accessory		VersaBracket™ attachment
VersaClip™ Long accessory		VersaBracket™ 47 attachment
X-Clip™ II accessory		VersaBracket™ 67 attachment
X-Clip™ III accessory		
X-Gard™ 1.0 clamp		
X-Gard™ 2.0 clamp		
X-Gard™ End Cap attachment		
VersaGard™ bracket		
VersaGard™ V bracket		

Descriptors Upon First Reference (Continued...)

Grouped by Solution

Clamps	Wind
S-5-B™ clamp	WindClamp™ external seam clamp
S-5-B™ Mini clamp	WindClamp™ DL external seam clamp
S-5-E™ clamp	WindClamp™ UD external seam clamp
S-5-E™ Mini clamp	WindClamp™ 2X external seam clamp
S-5-EF™ clamp	
S-5-FA™ clamp	
S-5-H™ clamp	
S-5-H™ Mini clamp	
S-5-H90™ clamp	
S-5-K Grip™ clamp	
S-5-K Grip™ Mini clamp	
S-5-K Grip Snow™ clamp	
S-5-KHD™ clamp	
S-5-MX™ Mini clamp	
S-5-N™ clamp	
S-5-N 1.5™ clamp	
S-5-NH 1.5™ clamp	
S-5-NH 1.5™ Mini clamp	
S-5-Q™ clamp	
S-5-Q™ Mini clamp	

Descriptors Upon First Reference (Continued...)

Grouped by Solution

Clamps	Inserts
S-5-R465™ clamp	S-5-GX™ 10 insert
S-5-R465™ Mini clamp	S-5-GX™ 50 insert
S-5-S™ clamp	S-5-GXM™ 10 insert
S-5-S™ Mini clamp	S-5-GXM™ 50 insert
S-5-SS™ clamp	S-5-KHD™ 3" insert
S-5-SS™ Mini clamp	S-5-KHD™ 6" insert
S-5-T™ clamp	
S-5-T™ Mini clamp	
S-5-U™ clamp	
S-5-U™ Mini clamp	
S-5-USF™ clamp	
S-5-V™ clamp	
S-5-V™ Mini clamp	
S-5-Z™ clamp	
S-5-Z™ Mini clamp	
S-5-ZF™ clamp	
S-5-ZH™ clamp	

Image and Text Notation Rules

Punctuation as it pertains to placement around “S-5!”

- If S-5! falls at the end of a sentence/question, no further punctuation is required after the exclamation point.

References for Domestic and International Markets

- DOMESTIC (Imperial): Use a decimal point in numbers (e.g. 4.25”)
- INTERNATIONAL (Metric): Use a comma in numbers (e.g. 107.95 mm)

Units of Measure

- Always insert a space between a number and its unit of measure (i.e. 60 mm)

Place Values - Always put a zero before a decimal point

- If there is not a number before the decimal point (i.e. in the “ones” place value), a zero needs to be put in for clarification (e.g. .98 should be written as 0.98).

Sample Product Sheet (Brochure)

S-5!® The Right Way

SnoBracket™ TB and
SnoBracket™ RB

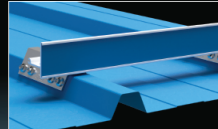
When mounting snow retention systems to your insulated metal panel (IMP) roofs, you need attachments built to restrain potentially dangerous accumulated snowpack from avalanching and maintain your panels' high insulating values. SnoBracket is a sheeting-only bracket created specifically for trapezoidal-ribbed IMPs, and it comes in two sizes to fit popular rib profile dimensioning. When paired with S-5! ColorGard®, SnoBracket offers an ideal snow retention solution with durable, tested, watertight and proven products.

Protect Your Insulated Metal Roof's Thermal and Moisture Barrier

IMPs deliver energy savings, high R-values and protection against condensation. SnoBracket protects your IMP investment by securing into only the upper portion of the panel to prevent thermal bridging to the internal structure. Moreover, SnoBracket protects your roof with factory-applied, premium, closed-cell EPDM rubber gaskets, creating a positive seal against water intrusion.

Angled Attachments Provide Greater Strength

SnoBracket attaches to your IMP trapezoidal rib in shear using (8) 1-inch, self-piercing fasteners (4 fasteners on each side) resulting in much greater holding capacity.



SnoBracket™

FEATURES AND BENEFITS

- Available in two sizes to fit most trapezoidal profiles
- Sheeting-only attachment prevents thermal bridging with proven strength
- Compatible with S-5! ColorGard snow retention system
- ASTM E2140 testing and factory-applied EPDM seals prevent leaks
- Corrosion-resistant materials warranted for the life of your roof
- Endorsed by multiple IMP manufacturers

888-825-3432 | www.S-5.com | 

FRONT

"The Right Way" is printed in bold, S-5! yellow and in italics on the right-hand side of the brochure.

Version and date must be updated whenever product sheet is altered.

Product title should be printed with the appropriate™ or® on the right-hand side of brochure in bold text and in S-5! gold.

ONLY use the official red, white and blue US flag icon.

S-5!® The Right Way

Tailored for U.S. and international markets, SnoBracket comes in two sizes – SnoBracket TB and SnoBracket RB – to fit popular IMPs and offer easy installation any season of the year.



SnoBracket TB paired with the ColorGard® snow retention system

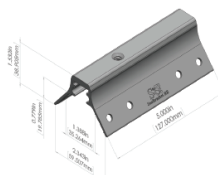
SNOBRACKET™ TB



Compatible with 1.22" (31 mm) horizontal top dimension trapezoidal profiles such as:

- KingSpan KingRib
- Vicwest HR3/HR5
- AWIP HR3/HR5
- and similar profiles

SNOBRACKET™ RB



Compatible with 1" (25.4 mm) horizontal top dimension trapezoidal profiles such as:

- Multi-Span LS-36
- and similar profiles

Installation Is Simple!

Installation is simple! Wipe away excess oil and debris at SnoBracket locations. Mount directly to the rib of the panel, straddling the profile. To ensure brackets are installed in a straight line, prepare a single SnoBracket at each end of the assembly at desired location with bolt hole oriented downslope. Secure the bracket to the roof by driving the provided fasteners into the pre-punched holes. Use a string line between the two brackets to mount the remaining SnoBrackets in a row. All 8 pre-punched holes must be used to achieve published tested strength. The SnoBrackets are now ready to install the S-5! ColorGard system with VersaClip.

To design site-specific assemblies, contact our applications engineering team at 888-825-3432 or support@s-5.com.



Note: The SnoBracket TB is represented in the above installation sequence. The steps remain the same for the SnoBracket RB.

S-5!® Warning! Please use this product responsibly!

Products are protected by multiple U.S. and foreign patents. Visit our website for complete information on patents and trademarks. For maximum holding strength, fasteners should be tensioned and re-tensioned as the seam material compresses. Clamp screw tension should be verified using a calibrated torque wrench between 160 and 180 inch pounds when used on 24ga steel, and between 130 and 150 inch pounds for all other metals and thinner gauges of steel. Consult www.S-5.com for published data regarding holding strength.

Copyright ©2012 Metal Roof Innovations, Ltd. S-5! products are patent protected.
S-5! aggressively protects its patents, trademarks, and copyrights. Version 102623.

Distributed by

BACK

Sample Product Install Sheet



The Right Way™ to attach almost anything to metal roofs!

Installation Instructions

Attention! This document is a guide only. This product may not be suitable for every application. The user is responsible for all necessary applications engineering and design. Please scan the QR code to the right for additional information, warnings and disclaimers regarding product use.

You can also view load test results at www.s-5.com where applicable, or contact your S-5! distributor for more information.

These instructions are for use by those experienced in the trade. Always follow appropriate safety precautions and use appropriate tools.

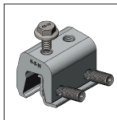


What's Included in Your Box

S-5-N

Based on 1 Part

- 2 - 3/8 x .90" Setscrews (10 mm x 23 mm)
- 1 - M8 x 16 mm Hex Flange Bolt
- 1 - N Insert
- Minor Box Qty: 30*
- Master Box Qty: 120*



S-5-N Mini

Based on 1 Part

- 1 - 3/8 x .90" Setscrew (10 mm x 23 mm)
- 1 - N Insert
- Minor Box Qty: 50*
- Master Box Qty: 200*



*Broken-box quantities may vary

Note: For the S-5-N Mini, in all applications other than a PVKIT, you will need to purchase a Hex Flange top bolt separately.

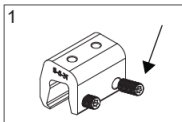
What You'll Need for Installation

- Screw Gun
- T30 Torx Bit Tip (provided)
- Dial-Calibrated Torque Wrench

(For accurate tension values, do NOT use a clicking torque wrench; inquire with S-5! for proper tool sourcing)

How to Install S-5-N and S-5-N Mini

1. Load the setscrew(s) into the clamp. (Fig 1)



FRONT

NOTE: Section must always be included in every set of install instructions.

Version and date must be updated whenever install instructions are altered.

"The Right Way" should be bold, italicized and printed with ™.

Attention! section remains the same for each set of install instructions. The QR code sends readers to the S-5! website for the rest of the disclaimer.

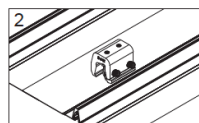
Install Instructions Sections

All products include the following headers:

- What's Included in Your Box
- What You'll Need for Installation
- How to Install [INSERT PRODUCT NAME]

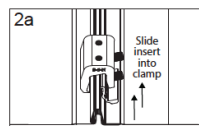
S-5-N™ Installation Instructions

2. Position clamp and insert at desired location along the seam as shown. (Fig 2)



NOTE: On wider panel profiles, it may be necessary to place the clamp onto the seam first and then slide the insert into it. Seams that exceed maximum allowance of 0.82" at the widest part of the seam may require hand crimping to facilitate clamp fit. (Fig 2a)

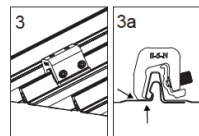
3. The clamp should be over the seam and insert as shown. (Fig 3) Make sure the toe of the clamp engages beneath the fold of the seam as shown. (Fig 3a)



4. Tighten the setscrew(s) using a screw gun* and the included bit tip (Fig 4). When relying on published load values, setscrew tension should be verified periodically using a dial-indicating calibrated torque wrench to ensure the tool is consistently achieving the recommended torque range (Table 1).

When installing the S-5-N clamp: Setscrews should be alternately tensioned as shown in Fig 4a until both setscrews have achieved recommended torque.

When installing the S-5-N Mini clamp: The seam material will compress evenly during the first tightening.

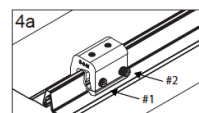


5. Attach your ancillary and tighten the bolt. For critical attachment applications, reference Table 1 for the appropriate torque.



Table 1

Specified Torque	Inch Pounds	Foot Pounds	Nm
Setscrew on 22ga (0.8 mm) steel	160-180	13-15	18-20
Setscrew on 24ga (0.6 mm) steel and all other materials	130-150	11-12.5	15-17
M8 Hex Flange bolt	160	13	18



Once installed correctly, the mechanical interlock is established and these clamps require no maintenance or torque re-inspection for the life of the roof.

NOTE: Any S-5! warranty and/or calculation may be void if hardware is used that was not furnished by S-5! directly or through one of their licensed distributors or any assembly that has not been tested by S-5!

S-5! Warning! Please use this product responsibly!

Products are provided for reference only and do not constitute a warranty. For published data regarding building strength, customer torque, patents, and trademarks, visit the S-5! website at www.s-5.com. Copyright 2022, Metal Roof Innovations, LLC. S-5! products are patent protected. S-5! aggressively protects its patents, trademarks, and copyrights. PhotoBooklet 9/15/2022

BACK



\$-5!®
The Right Way