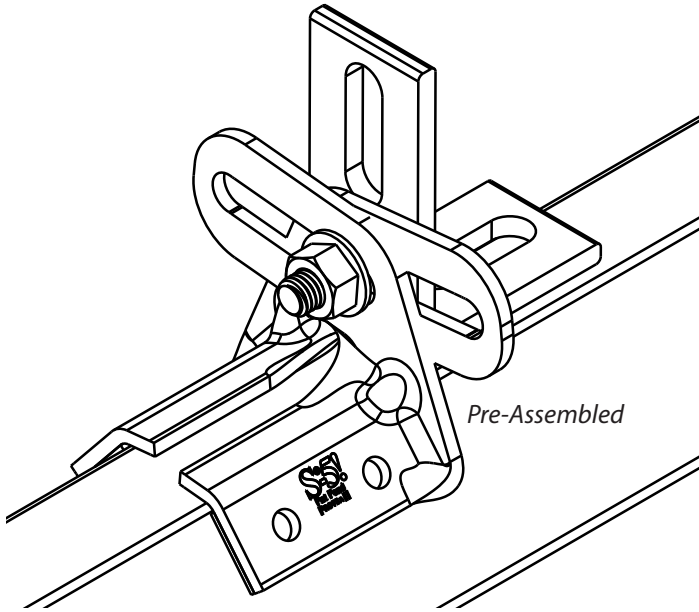


Providing *The Right Way* to attach virtually anything to metal roofs worldwide. SPECIFICALLY DESIGNED TO FIT MOST TRAPEZOIDAL SHEET SHAPES.



Tools Needed

- String Line • Rag • Screw Gun
- 5/16" (8mm) Drive Socket
- 1/2" (13mm) Open-End (Spanner) or Socket Wrench

Included*

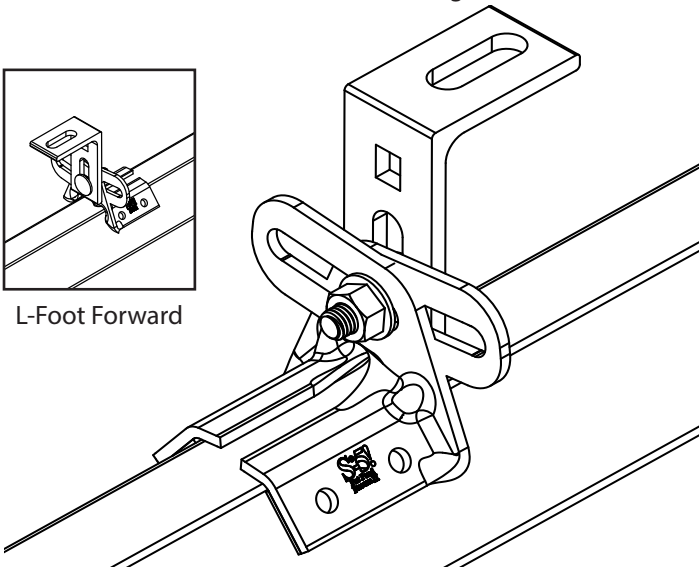
- (100) pre-assembled Protea II
- (410) stainless steel capped self-piercing screws

**Broken-box quantities may vary*

Installation

Side-Mounted Rail

Protea II comes pre-assembled in the correct orientation for use with side-mounted rails. If the assembly has been deconstructed, orient the L-foot as shown in Fig. A.



1. Determine the location of assembly. Wipe away excess oil and dirt from panel surface.
2. To ensure brackets are correctly aligned, install a single Protea II on each end of the roof at a measured, consistent distance from the bottom edge of the roof. Use a string line between the two brackets. Mount the remaining Protea II along the string line. For upslope bracket-spacing techniques, reference the S-5! website at www.S-5.com.

Bottom-Mounted Rail

Remove the M8 nut and orient the Protea II's L-foot as shown in Fig. B to mount the PVKIT or bottom-mounted rails.

ATTENTION! Please use these products responsibly! Visit our website or contact your S-5! distributor for available load test results. The user and/or installer of these parts is responsible for all necessary engineering and design to ensure the Solar Feet™ have been properly spaced and configured.

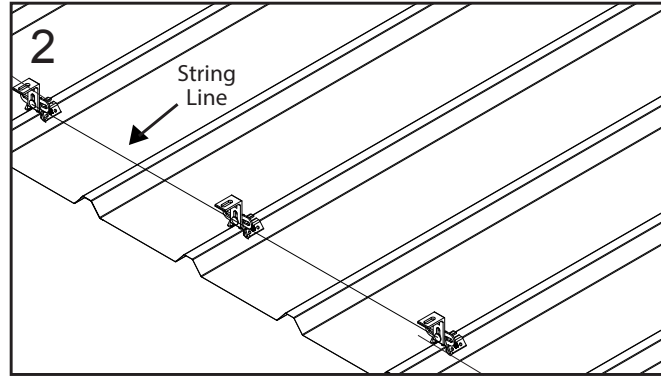


and/or installer of these parts is responsible for all necessary engineering and design to ensure the Solar Feet™ have been properly spaced and configured.

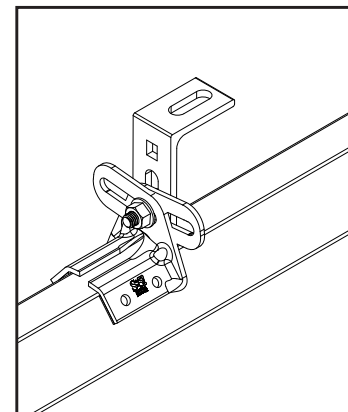
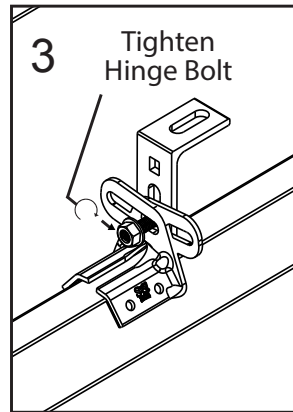
S-5!® Warning! Please use product responsibly!

Products are protected by multiple U.S. and foreign patents. For published data regarding holding strength, fastener torque, patents, and trademarks, visit the S-5! website at www.S-5.com. Copyright 2024, Metal Roof Innovations, Ltd. S-5! products are patent protected. S-5! aggressively protects its patents, trademarks, and copyrights.

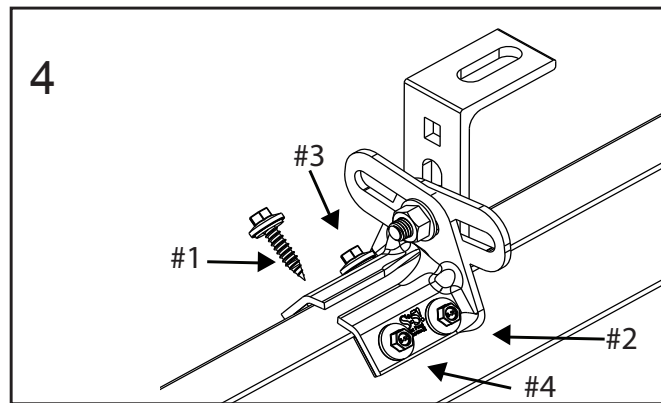
3. Before removing the protective paper over the EPDM pad, place Protea II onto the panel rib and hand-tighten the hinge bolt to customize the bracket's proper fit. Protea II's L foot is reversible, so be sure all brackets on the same row have the L-foot in the same orientation and face the same way. Align carefully, peel the protective paper off the EPDM pad and adhere the bracket to the roof.



4. To secure Protea II, press the bracket legs firmly against the panel rib with one hand, while screwing down with the other. Operate screw gun at slow speed, but considerable pressure. Alternate the provided screws through the pre-punched holes as shown in Fig. 4.

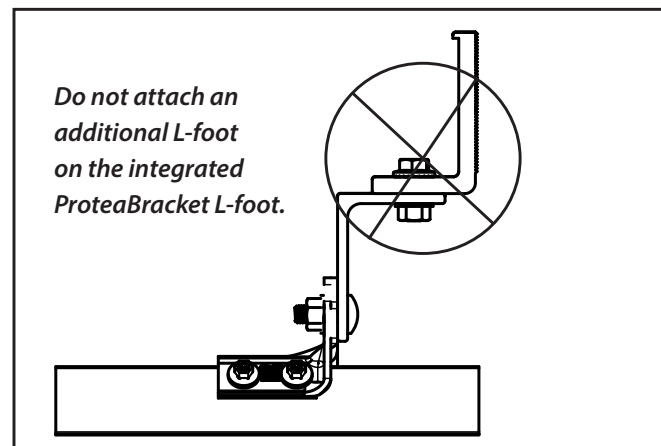


Use all four pre-punched hole locations to achieve tested holding strength. Be careful not to over tighten the screws: a slight compression extrusion of rubber around the washer is a good visual check. If a fastener has been stripped, it is important to remove the fastener and replace it with a waterproof bulb rivet. To avoid stripping, use a screw gun with depth-sensing nose piece or an adjustable torque clutch. Lastly, hold the end or slotted L-flange straight and firmly in place while using the open socket wrench to tighten the hinge bolt to the specified torque. Protea II is now ready to install other ancillaries, such as rail or PVKIT.



Do not attach an additional L-foot on the integrated Protea II's L-foot.

NOTE: Any S-5! warranty and/or calculation may be void if hardware is used that was not furnished by S-5! directly or through one of their authorized distributors or any assembly that has not been tested by S-5!.



Specified Torque	Inch Pounds	Foot Pounds	Nm
Hinge Bolt	225	18.75	25.4
M8 Nut for PVKIT	225	18.75	25.4