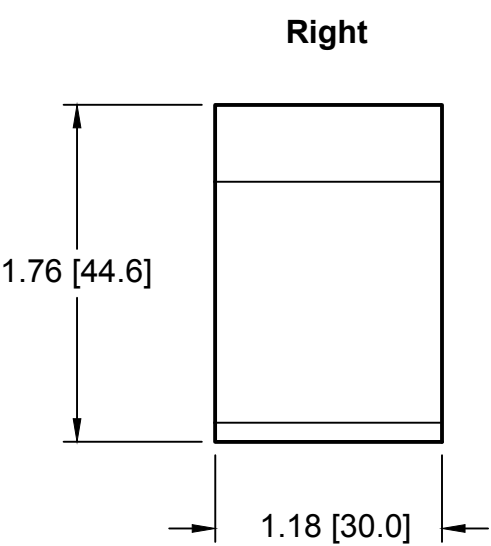
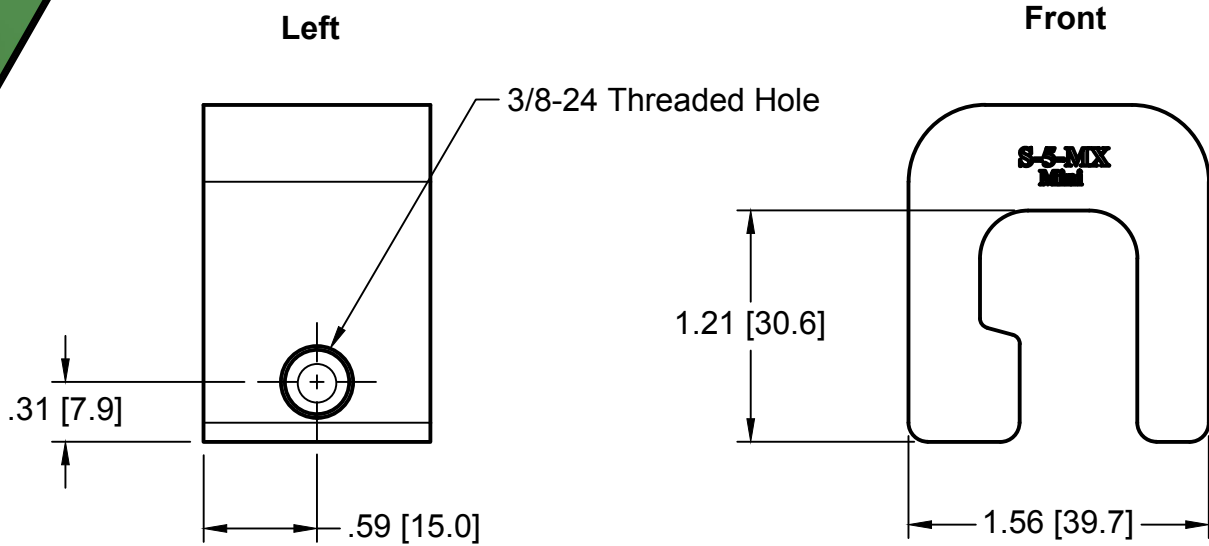
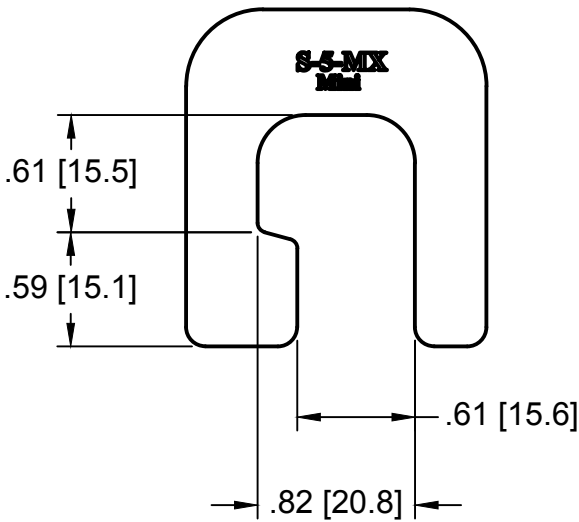
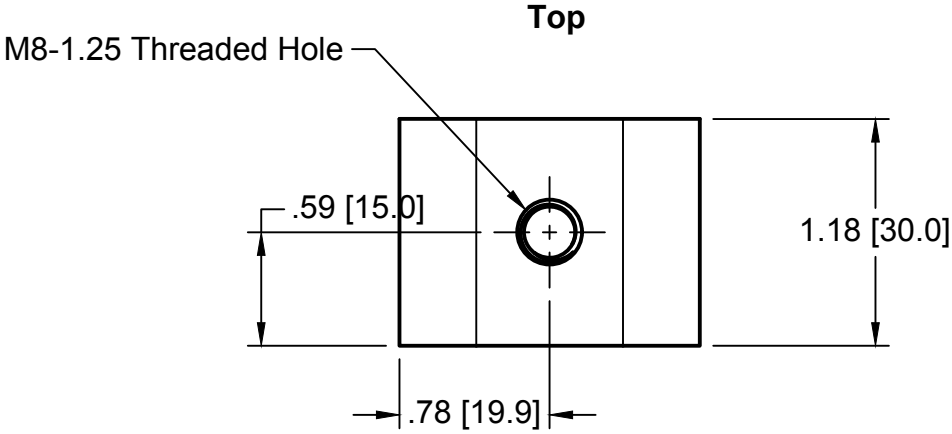
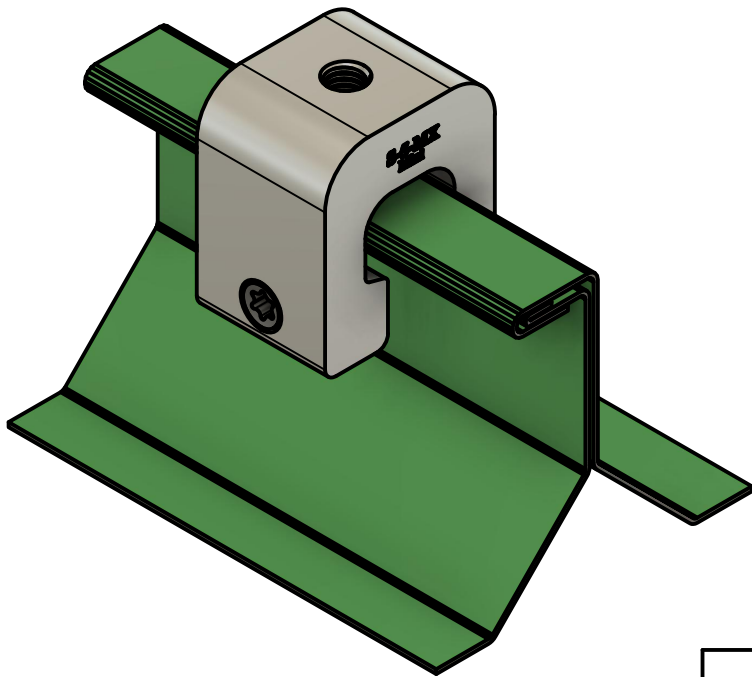
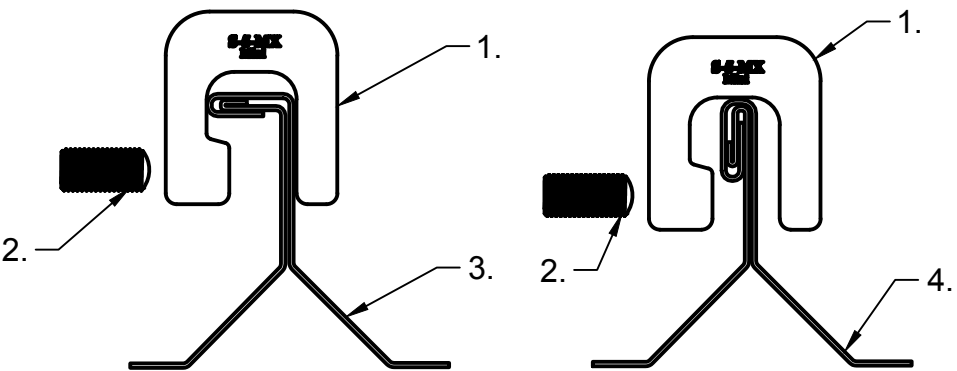





S-5-MX MINI



- General Notes:
- 1. S-5-MX MINI
 - 2. 0.9" 3/8-24 T30 Drive SetScrew
 - 3. Example single fold roof
 - 4. Example double fold roof



MATERIAL: 6000 Series AL				METAL ROOF INNOVATIONS, LTD.		
EST ASSEMBLY WT: 0.641 lbs				8750 WALKER RD		
HARDWARE: 0.9" 3/8-24 T30 Drive SetScrew				COLORADO SPRINGS, CO 80908		
				719-495-0518		
				719-495-0045 (FAX)		
	TITLE S-5-MX MINI [CCD]					
	DRAWING NO. KR-C-1-E			DRAWN BY SNLR		DATE 07/19/2022
	SCALE 1:1.25		FILE NAME KR-C-1-E (S-5-MX MINI) [CCD]			
	S-5!® PRODUCTS ARE PROTECTED BY MULTIPLE U.S. AND FOREIGN PATENTS. VISIT OUR WEBSITE AT WWW.S-5.COM FOR COMPLETE INFORMATION ON PATENTS AND TRADEMARKS					