

# S-5-TXL™ Installation Instructions

Providing *The Right Way*™ to attach virtually anything to metal roofs worldwide.

**S-5!**®  
*The Right Way*

**ATTENTION!** This document is a guide only. This product may not be suitable for every application. The user is responsible for all necessary application engineering and design. Please scan the QR code to the right for additional information, warnings and disclaimers regarding product use.

You can also view load test results at [www.S-5.com](http://www.S-5.com) where applicable, or contact your S-5!® distributor for more information.



## Included in the Box

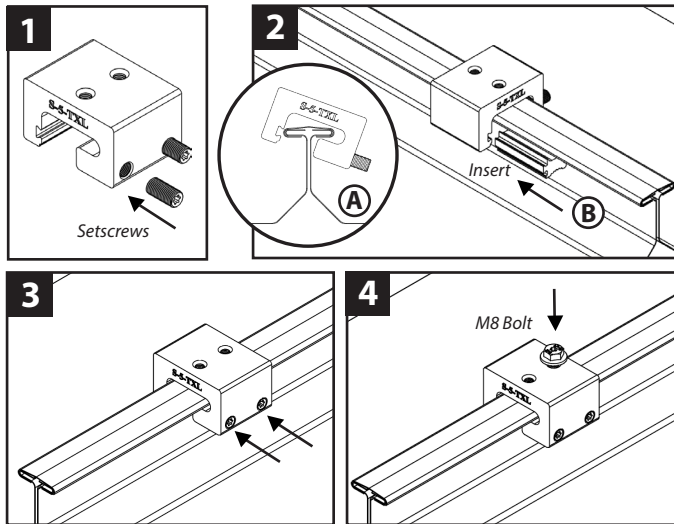
[Based on One Part]

- |  |  |
|--|--|
| <p>1] TXL Clamp (body)</p> <p>2] Setscrews<br/>3/8" - 24 x 0.90 in</p> | <p>1] TXL (clamp) Insert</p> <p>1] M8 Bolt 1.25 x 17 mm<br/>(13 mm/T30 Torx drive)</p> |
|--|--|

Minor Box Qty: 24 | Master Box Qty: 72

## Tools Required

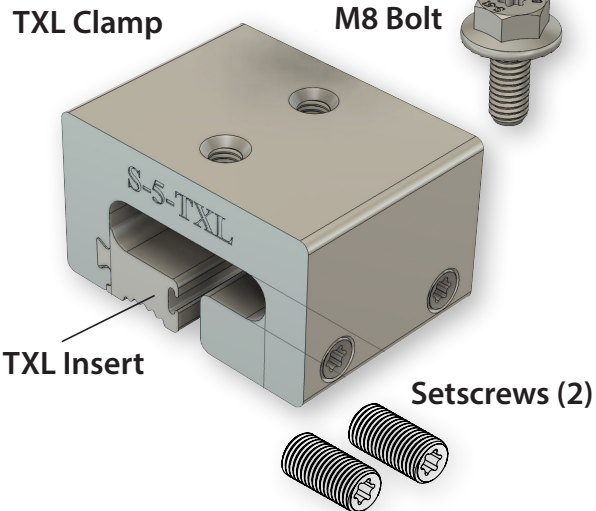
- Torque-Adjustable Screw Gun     Dial Indicating Torque Wrench
- T30 Torx Bit Tip [PROVIDED]
- \*For accurate tension values, do NOT use a clicking torque wrench.*



## Torque Chart

| Specified Torque                             | Inch Pounds | Foot Pounds | Nm    |
|--|-------------|-------------|-------|
| Setscrew on 20 and 22ga (0.8 mm) steel       | 160-180     | 13-15       | 18-20 |
| Setscrew on 24ga (0.6 mm) steel and aluminum | 130-150     | 11-12.5     | 15-17 |
| M8 Hex Flange bolt                           | 160         | 13          | 18    |

Note: Any S-5! warranty and/or calculation may be void if hardware is used that was not furnished by S-5! directly or through one of their licensed distributors or any assembly that has not been tested by S-5! These instructions are for use by those experienced in the trade. Always follow appropriate safety precautions and use appropriate tools.



## How To Install TXL

- Partially thread the provided round-point setscrews into the clamp by hand.
- (A) Position the clamp at the desired location along the seam. Install by rotating the clamp over the seam, so the batten cap of the seam is nested into the horizontal throat of the clamp.

(B) Slide the insert into position within the clamp body.
- Calibrate screw gun torque control using a dial indicating torque wrench to achieve the recommended torque. (**See Torque Chart**) Using the T30 Torx bit tip with the screw gun, tighten the setscrews. Tension one setscrew, then the other. Repeat this sequence once more on the now-compressed seam material. The setscrews will compress and dimple the seam material but will not penetrate it. It is suggested to verify proper gun torque control occasionally throughout the installation to be sure the gun is consistently delivering the recommended torque.
- Tighten the included M8 bolt to 160 inch-pounds (13 foot-pounds, 18 N-m).

(Checking and/or re-tensioning of setscrews post-installation is NOT required.)

S-5!® Warning! Please use product responsibly!

S-5!® Warning! Please use this product responsibly! Products are protected by multiple U.S. and foreign patents. For published data regarding holding strength, fastener torque, patents and trademarks, visit the S-5! website at [www.s-5.com](http://www.s-5.com). Copyright 2024, Metal Roof Innovations, Ltd. S-5! products are patent protected. S-5! aggressively protects its patents, trademarks and copyrights. 082824

www.s-5.com S-5-TXL™ Installation Instructions

888-825-3432