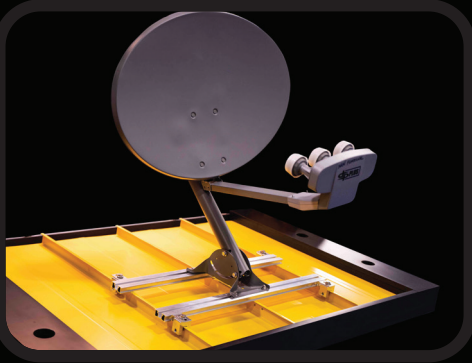


# S-5!<sup>®</sup>

*The Right Way*



**Satellite Dish**



**Junction Box**



**Conduit**



**HVAC**

## **GRIPPERFIX<sup>®</sup>**

Universal Mounting System

**Makes fixing almost anything  
on metal roofs simple!**

- No penetration of concealed-fix roof
- No field-applied sealants needed
- Ease of installation
- Eliminates corrosion and rust
- Free flow of rainwater under struts
- No damage to roof system
- Compatible with S-5! CanDuit™ clamps for securement of piping/conduit

To build a long-lasting system, it is crucial to maintain roof warranties and avoid destructive corrosion. Improperly installing utilities on a metal roof can compromise both the equipment and the integrity of the roof itself.

Don't settle for temporary solutions like concrete blocks for ballast. Long-term solutions require durable fixing methods, and that's where GRIPPERFIX comes in. It is the perfect solution for installing HVAC, satellite dishes, light fixtures, security cameras, piping/conduit, service walkways and other rooftop utilities. Choose GRIPPERFIX and preserve the integrity of your metal roof.

**The right way to attach almost anything to metal roofs!**



+61 3 8595 7001 | [www.S-5.au](http://www.S-5.au) |

## Exposed-Fix Metal Roof



## Concealed-Fix Metal Roof

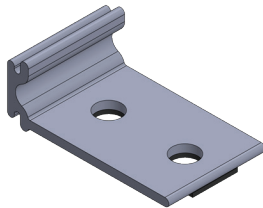


Securely fixes rooftop utilities to exposed-fix roof while still allowing free flow of rainwater under the system. All you need is the *GRIPPERFIX* Strut, S-5! self-piercing fasteners and EF Tabs. M8 bolts in different lengths are available to use with the optional damper pad(s). The *GRIPPERFIX* Leveler allows for the leveling of rooftop utilities up to 5 degrees when needed.

*GRIPPERFIX* simplifies utility fixing without damaging your roof. For concealed-fix roof projects, all you need is the *GRIPPERFIX* Strut, S-5! non-penetrating clamps and CF Tabs. The *GRIPPERFIX* Leveler allows for the leveling of rooftop utilities up to 5 degrees when needed. Select the appropriate S-5! Mini clamp for specific roof profile.

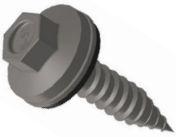
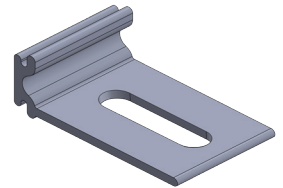
### EF Tab

Special design interlocks securely with strut  
Factory-applied EPDM rubber gasket



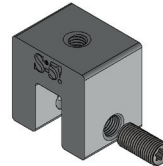
### CF Tab

Special design interlocks securely with strut  
Slotted hole for adjustment



### Piercing Fastener

S-5! thread, stainless head and needle point design offers superior strength with no drilling;  
EPDM gasketed screw together with EF Tab provides "double-seal" performance



### S-5! Mini Clamp

Select appropriate S-5! Mini clamp for specific roof profile

## System Components

(Components sold separately)

### GRIPPERFIX Strut

**GF-27** (Satellite applications)

**GF-52** (HVAC applications)

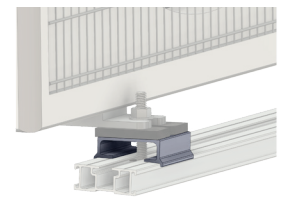
(300, 600, 1200 mm & 27" & 52")  
Design has channels for adjustments and placement on roof.



(Custom lengths available on quantity orders).

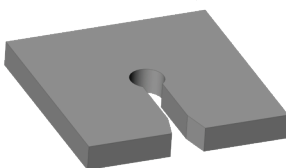
### GRIPPERFIX Leveler

Sold as a kit with (4) Levelers, (6) Damper Pads, (2) 60 mm Bolts, (2) 20 mm Bolts and (4) M8 Nuts



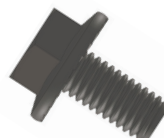
### GRIPPERFIX Damper Pad

(HVAC applications)  
Keyhole slot for insertion before, during or after assembly



### M8 1.25 Bolt

17, 20, 40, 50, 60 mm stainless steel bolt available



### M8 Hex Flange Nut



### S-5!® Warning! Please use this product responsibly!

Products are protected by multiple U.S. and foreign patents. For published data regarding holding strength, fastener torque, patents, and trademarks, visit the S-5! website at [www.S-5.com](http://www.S-5.com).

Copyright 2024 Metal Roof Innovations, Ltd. S-5! products are patent protected. S-5! aggressively protects its patents, trademarks, and copyrights. Version AU080724.

Distributed by